



Eco-Solar Home Tour 2026

21st June, Sunday 10 am to 5 pm

Priddis Rammed Earth Home

Tour Day: 21st June, Sunday

Address: 252186 2157 Dr W,
Priddis

Hosts: Homeowners and builder

Parking: in driveway

Energuide: GJ/yr



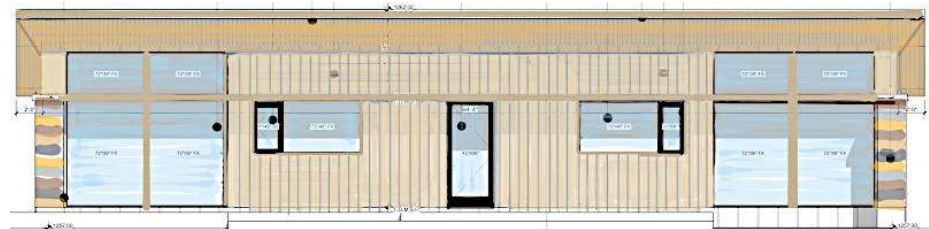
Solar Club Member

Summary points why people need to see your home

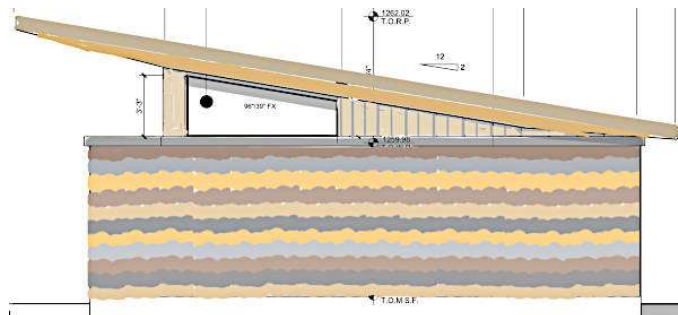
- The beauty of rammed earth
- Unique Litezone windows
- Passive solar design
- Pressure treated wood basement
- Designed for an inside/outside connection
- Electric only mechanicals (no gas connection to the home)

What are the main things people will see at your home?

- People will see a beautiful high-performance passive home
- Rammed earth is a rare and unique feature
- Litezone windows out of Edmonton are also unusual. They have an r value of 16.7 where most high-performance windows are less than half as efficient
- The view out of both the south windows and north windows are stunning and varied



right
home
people
large



• A
sized
for 3
and 3
dogs





Eco-Solar Ho Tour 2026

Priddis Rammed Earth Home

Why is this home on the tour?

Ken worked for a climate change not for profit. He and Laura were frustrated to see that buildings generally weren't being constructed with any care or attention to their performance or energy efficiency. They decided they wanted to be the change they wished to see; and started looking for a plot of land that had variation in the landscape, trees with open space to build their right sized, energy efficient home. Walking the land, they decided on a design that felt like the outside flowed into the inside with large windows that showcased the view of the ridgeline to the south and the forest to the north. Large overhangs allow the home to be shaded in the summer with solar gain in the winter. This passive home is a true labour of love-designed with a ton of care, intention, and passion for energy efficiency and connecting with the landscape. It's perfectly right-sized for their family and filled with thoughtful, durable, and beautiful choices. A testament that a home can be resilient, comfortable, and incredibly inviting. They feel fortunate to partner with Beacon Homes and Snap Building to realize their dream. Their knowledge and attention to detail is unmatched.



What Features Save on Energy Costs?

All walls R40, roof R60, basement R30, Litezone windows with a high R-value, a variable speed 3T 20 SEER2 air source heat pump, a high efficiency hybrid hot water heat pump, efficient ERV, European small washer/dryer, energy star appliances

What Features Save on Water Costs?

Low flow toilets and shower heads, Miele dishwasher and washer use less water than standard appliances

Other special Features

They own 2 electric cars. They will be planting fruit bearing plants and have a vegetable garden. They will keep the landscape natural with native plants; there will be no lawn that needs water or fertilizing.

