



Eco-Solar Home Tour 2026

14th June, Sunday Noon to 5 pm

Lendrum NZR Home



Solar Energy Solutions



Tour Day: 14th June, Sunday

Address:

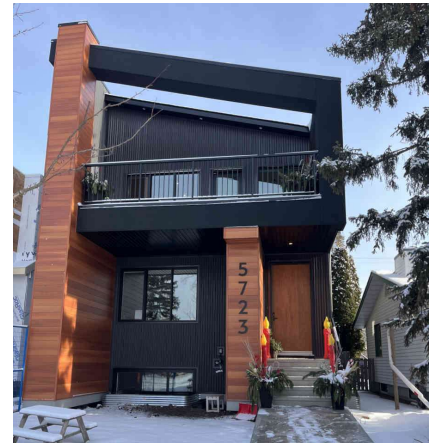
Hosts: Homeowners

Parking: On street

Energuide Rating: 64 GJ/yr

Summary

- all-electric near net zero home
- solar ready
- double-stud R34 walls
- unique inverted floor plan



What are the main things people will see and learn about at your home?

- home heated by only a heat pump for heating and cooling. No gas line needed.
- deep window wells with high performance windows, showcasing the ICF basement walls and an offset double stud wall assembly (R34) wall structure.
- a mix of new and repurposed fixtures and materials, including some from the original home.
- passive house design concepts that features a great view.
- an inverted floor plan with a second-floor vaulted ceiling and deck.
- solar ready south facing shed roof design to maximize solar aspect.





Eco-Solar Home Tour 2026

Lendrum NZR Home

Why is this home on the tour?

This home is a beautiful custom infill home with unique architecture. It has been designed largely by the owners themselves to include many energy efficient techniques and design principles. This has made it high performance, cost effective, and a comfortable living space to raise their family in. The owners were inspired by attending the eco home tour for many years and are excited to now inspire others in their desire to build well built, energy efficient living spaces. The owners take great pride in their unique design and use of passive house concepts, and would like an opportunity to showcase it and teach others about cost effective choices they can make that will pay off in the long term.

What features save on energy costs?

- air source heat pump
- hrv
- offset double stud wall (2X6 exterior, 2X4 interior, R34 wall assembly)
- R60 roof insulation - high performance windows and doors
- 4in sub slab insulation in the basement
- insulated concrete form (ICF) basement walls
- maximised exposure for solar heat gain
- ventless heat pump combo washer/dryer
- energy star appliances

What features save on water costs?

- low flow toilets
- energy star combo washer/dryer and dishwasher

Other special features

- Second floor deck off the living space to provide indoor/outdoor living.
- inverted floor plan to showcase the U of A farm sunset view.

