



Eco-Solar Home Tour 2026

13th June, Saturday Noon to 5 pm

Forest Heights NNZ Home



Tour Day: 13th June, Saturday

Address:

Hosts: Homeowners and
Builder

Parking: On street

Energuide Rating: 49 GJ/yr



Summary

- Near Net Zero home
- Super insulation
- Large solar array
- Designed for aging in place
- Infill design fits into the neighborhood

What are the main things people will see and learn about at your home?

- Near net zero energy home with installed rooftop solar array - 17.1 kW system with 38 panels (28 garage, 10 house)
- High-performance building envelope: R38 double-stud walls, R24 ICF foundation
- Vaulted living area with exposed wood beams and central fireplace
- Designed for accessibility and aging in place
- Compact layout with custom storage and thoughtful sightlines
- Contemporary design with durable, sustainable materials





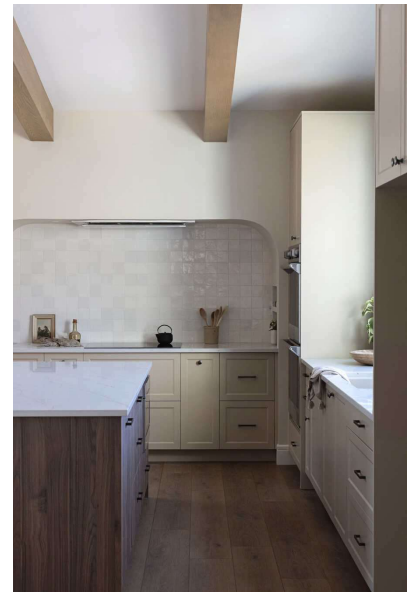
Eco-Solar Home Tour 2026

Forest Heights NNZ Home

Why is this home on the tour?

This custom 1,575 sq ft Near Net Zero bungalow was purpose-built for a compact, sloped urban infill lot, proving that energy efficiency and beautiful, adaptable design can thrive even on challenging sites.

Inspired by mid-century modern architecture with a contemporary edge, the home features real cedar and metal siding, vaulted ceilings with exposed beams, and a central fireplace that adds both warmth and visual interest. A 17.1 kW solar PV system (38 panels), air-source heat pump, and super-insulated envelope work together to deliver Near Net Zero performance. Accessibility was thoughtfully integrated through a near-grade rear entry, despite extensive grading and drainage needs. Inside, the layout prioritizes functionality and long-term flexibility, with smart storage, a combined laundry and primary closet, and a fully independent basement suite for care or rental. Bedrooms are well-separated to support multi-generational living. This home is a model of how sustainable technologies and thoughtful design can meet the demands of modern urban life.



What features save on energy costs?

- Solar - 17.1 kW system with 38 panels (28 garage, 10 house)
- Double-stud wall construction (R38 cellulose insulation)
- R24 ICF foundation
- Air-source heat pumps for both heating and domestic hot water
- HRV system for healthy and efficient air exchange
- Triple-pane, high-efficiency windows
- Energy Star appliances and LED lighting
- Heat pump dryer
- Thoughtful layout that reduces heated space while maximizing usability

What features save on water costs?

- Low-flow fixtures
- Drain Water Heat Recovery (DWHR) system
- Water-efficient appliances
- Rain barrels used for garden and landscaping

Other special features

- Near Net Zero home with installed solar and EV charger-ready
- Basement suite rough in for rental or live-in caregiver
- Designed for aging in place with accessible features
- Extensive site work including retaining walls and drainage
- Compact infill design that fits naturally into the neighborhood
- Blends mid-century modern inspiration with modern sustainability