



# Eco-Solar Home Tour 2025

Sunday 8 June, Noon to 5 pm

## Queen Alexandra EE Home

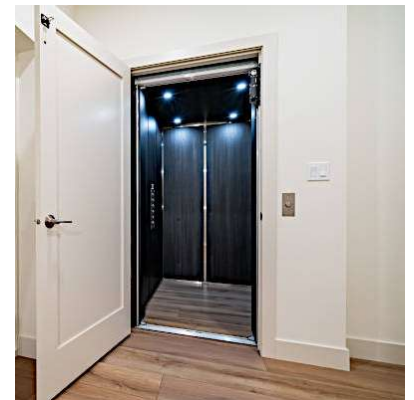
**Tour Day:** 8<sup>th</sup> June, Sun  
**Address:** 7104 105 St NW  
**Hosts:** Effect Home Builders  
**Parking:** Available  
**Energuide Rating:** 93 GJ/yr

### Summary points why people need to see your home

- Experience a cutting-edge, energy-efficient home designed for entertaining and long-term versatility
- Learn about unique efficiency details, home elevators, basement suites, and rooftop patios.
- See how solar power, heat pumps, and smart appliances reduce energy costs.
- Discover sustainable solutions for a greener, more comfortable home.

### What are the main things people will see and learn about at your home?

- Low embodied carbon materials
- Dual source heating system
- Entertaining - focused floor plan
- A home design focused on planning for future needs and versatility





# Eco-Solar Home Tour 2025

## Queen Alexandra EE Home

### Why is this home on the tour?

This project had numerous goals. First, the homeowners needed a home that would accommodate their lifestyle with age-in-place features. They also required a secondary suite for relatives, envisioning a lasting, affordable generational home for their children to inherit.

As a home inspector with 34 years of experience, the homeowner understood that achieving the desired quality and longevity meant building an energy-efficient home. The result is a balanced design that meets both current and future needs, ensuring efficiency, comfort, and affordability for changing occupants and lifestyles.



### What features save on energy costs?

- 11" Double Stud wall system with compacted blown-in insulation (R39)
- Air tightness through a mix of mechanically compressed gaskets, spray foam, and exterior air barriers
- ICF foundation (R24)
- Triple pane, low e windows
- Heat pump for forced air and water heating.



### What features save on water costs?

Water costs are aided by an Air Source heat recovery hot water tank and low flow plumbing fixtures

### Other special features

Roughed in for electric car

