



# Eco-Solar Home Tour 2024

Saturday 1 June, Noon to 5 pm

## Keswick NZE Home

**Tour Day:** Sat 1 June  
**Address:**  
**Hosts:** Rosecrest  
**Parking:** On street  
**Energuide Rating:** 0 GJ/yr



### Summary points why people need to see your home

- Unique ground source air cooling system
- Provides cooling in summer
- Makes heat recovery ventilator more efficient
- Owner's research shows that it provides 90% of cooling

### What will people see and learn about at your home?

- Air source heat pump heating system
- Air source heat pump hot water tank
- Solar P.V. system
- Ground pipe air cooling system
- Triple glazed windows
- Elevator
- High Efficiency heat recovery venting
- Extra insulation in building envelope

### Are there main items that they can't see?

- Extra insulation in building envelope
- Super Airtightness





# Eco-Solar Home Tour 2024

## Keswick NZE Home

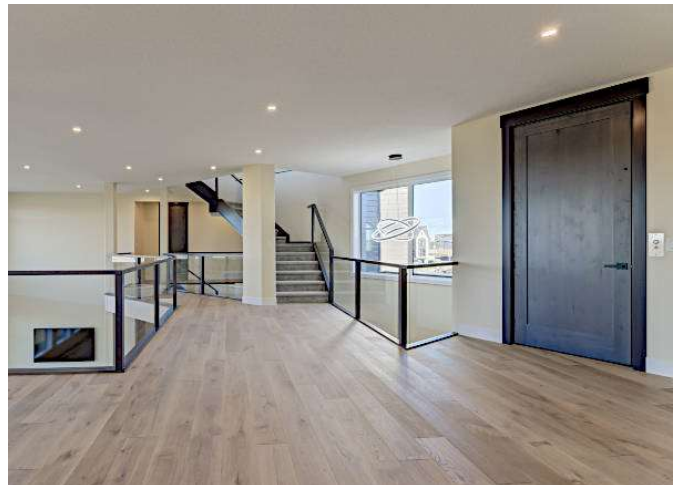
### Why is this home on the tour?

This home combines Built Green Building practices with advanced energy saving construction technology, but also including passive design features. All of these technologies are presented in a stunning modern design. This home is also advancing the use of in-ground air pipe system for the use of air cooling the house as well as more advanced heat recovery air venting system. It will be certified as “Built Green Platinum” as well as net zero.



### What features save on energy costs?

- R80 attic insulation
- R40 wall insulation – exterior walls
- R40 foundation insulation
- R12 under slab insulation
- 1.0 air changes/hour or better air exchange rate
- Advanced heat recovery by interconnection with large volume air ground pipe
- Triple glazed, dual coated windows
- Passive design shading elements
- Air source heat pumps as primary air heating system
- Air source hot water tank as primary source of domestic hot water
- Drain heat recovery
- 65 panel photovoltaic system



### What features save on water costs?

- Water saving faucets
- Highly efficient water saving, low flush toilets
- Drain water heat recovery
- Hot water circulation system

### Other special features

- Handicap adapted with elevator to all levels including the garage