



# Eco-Solar Home Tour 2022

Saturday 4 June, Noon to 5 pm

## Keswick NNZ Home

**Tour Day:** Sat 4 June  
**Address:** #10 The Banks,  
3466 Keswick Blvd SW  
**Hosts:** Rosecrest Homes  
and Homeowner  
**Parking:** on street  
**Energuide Rating:**  
5GJ/yr\*



### Summary of why people should see this home

- Large, attractive NNZ home with river view
- Barrier-free with elevator for aging in place
- Interesting fireplace heat ducting system
- Home is completely finished now

### What will people see and learn about at your home?

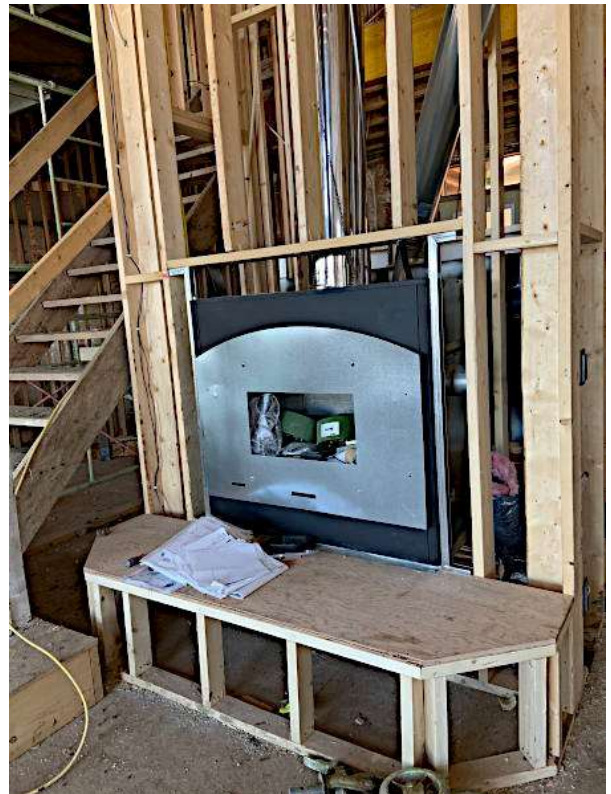
- Very efficient building envelope
- Air source heat pumps
- Solar PV System
- Under basement floor –air flow cooling system
- Hot air ducts from wood burning built into fireplace

### What are the main things people will see at your home?

- Air source heat pumps
- Solar PV System

### Are there main items that they can't see?

- Built Green Platinum
- Under basement floor air cooling system



*Butterwick*





# Eco-Solar Home Tour 2022

## Keswick NNZ Home

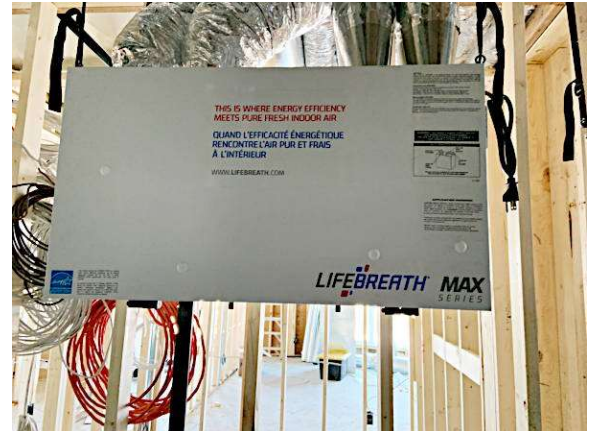
### Why is this home on the tour?

This expansive home has been designed for retirement living on one floor and adapted for special needs to allow for homeowners to age in place with extra wide doors and an elevator to all levels. There is an in-law suite in the walk out basement. Enjoy a panoramic view of the river valley in this super energy efficient home. Large solar PV is sized to offset all the home's electric needs and may get very close to net zero energy.



### What features save on energy costs?

- Efficient building envelope; 35% better heat loss than reference code
- 2" x 8" walls with 3" EPS outside for R40
- R40 Fibreglass insulation on inside of rim joists
- R40 Fibreglass insulation on inside of concrete walls
- R16 Styrofoam insulation under concrete garage floors
- R80 insulation in attic
- Triple glazed, dual coated, argon filled windows
- Air source heat pumps
- 31 kW solar PV System
- Under basement floor – cooling ducts to reduce air conditioning
- Hot air ducts from wood burning built in fireplace
  - Unusual ducting distributes fireplace heat through the home



### What features save on water costs?

- Insulated hot water circulation pipes
- Low flush toilets
- Low Flow Toilets

### Are there any other special features you want to highlight?

- Handicap adapted home
- Built Green Platinum