

**CHANGE
FOR
CLIMATE**

Edmonton



Butterwick



Eco-Solar Home Tour 2020

Sunday 7 June, Noon to 4:30 pm

Graydon NZE Home

Tour Day: Sunday 7 June

Address:

Hosts: Landmark Homes

Parking: On Street

Energuides Rating: 0 GJ/yr

Summary points why people need to see your home

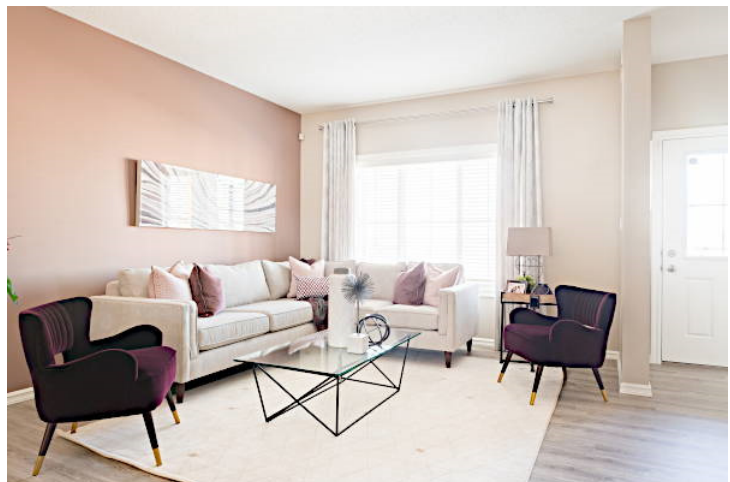
- An affordable net zero energy home in Edmonton climate
- A production net zero home, looks like all the rest of the homes in the neighborhood but is dramatically more efficient and all electric
- **Home Model** – Niagara, 1362 SqFt (Not including basement)

What are the main things people will see at your home?

- Solar PV with a string inverter system
- Cold Climate Air-Source-Heat-Pump (ASHP) for space heating and an ASHP Hot Water Tank
- Medium velocity heating system with house duct venting

Are there main items that they can't see?

- Wall, attic and underslab insulation
- Air-tight building envelope
- Durable materials and construction methods





Eco-Solar Home Tour 2020

Graydon NZE Home

Why is this home on the tour?

This net zero show home will serve to introduce the concept & educate the public about affordable ultra-energy efficient housing. The building works as a holistic system, energy is conserved, recycled and generated on site. The result is a home that is exceptional in energy performance and comfort.

What features save on energy costs?

- R5 exterior rigid insulation + R22 fibreglass batt in wall cavity
- R80 attic insulation
- R8 2" basement floor insulation
- R24 fibreglass batt + R14 mineral wool basement insulation
- Triple pane, argon filled windows with low-coatings
- Drain water heat recovery (6ft)
- Heat recovery ventilator
- Minimized attic penetrations
- Energy Star appliances
- LED & CFL lamps in all fixtures

What features save on water costs?

- All low flow water features

Are there any other special features you want to highlight?

- Solar PV monitor and a Home Energy Consumption monitor for Net Zero Energy verification.
- 0.88 air changes per hour
- Fully electrified home, no natural gas hookup equates to savings on administration fees.



Factory built panels reduce waste

